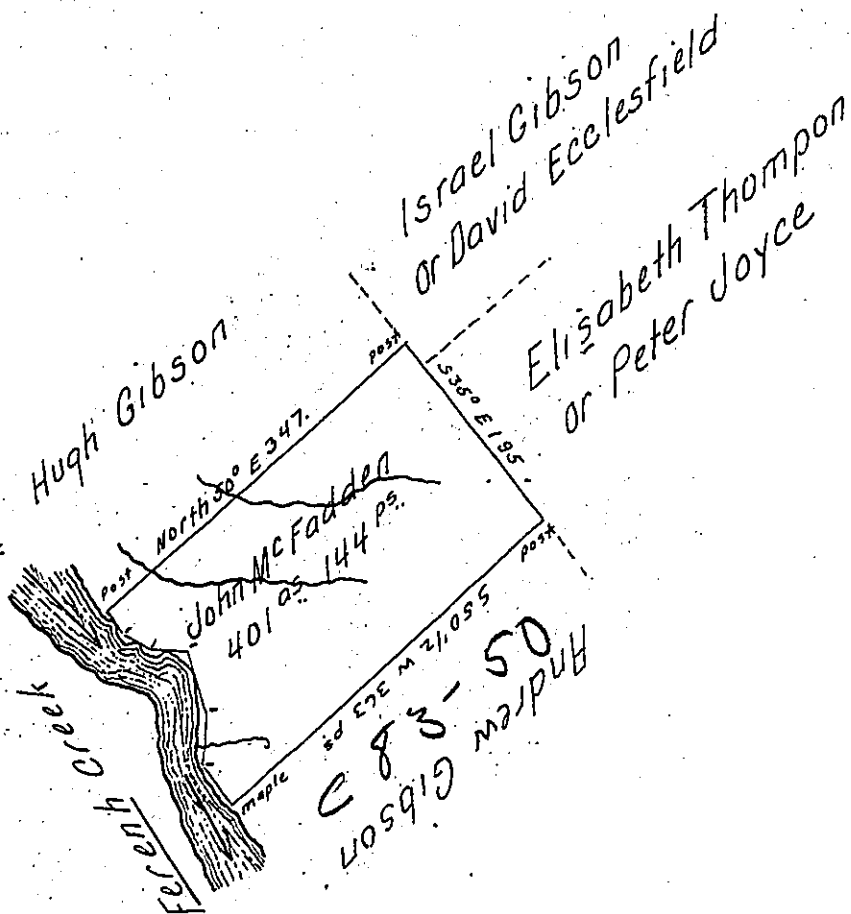


Courses and distances up French Creek beginning at a Maple.

- N. 39° W. 38
- N. 10° W. 49
- N. 21½° W. 45
- N. 72° W. 27.
- N. 48° W. 31
- N. 11¼° E. 13.4



In pursuance of a Warrant for 400 Acres of land dated the 22nd day of February 1804 was surveyed August the 16th 1804 for John McFadden the above described Tract of land Containing 401 Acres 144 perches and an allowance of Six per Cent for Roads &c. Situate in Mead Township Crawford County.

William McArthur D.S.

To Samuel Cochran Esquire
Surveyor General

IN TESTIMONY that the above is a copy of the original remaining on file in the Department of Internal Affairs of Pennsylvania, made conformably to an Act of Assembly approved the 16th day of February, 1833, I have hereunto set my Hand and caused the Seal of said Department to be affixed at Harrisburg, this twenty seventh day of December 1905.

Lois R. Brown
Secretary of Internal Affairs.